

# SWPPP TIPS FOR MAINE AUTO RECYCLERS



MARA Annual  
Meeting  
March 26, 2009



Jen Jespersen & Fred Dillon, FB Environmental



- What is a SWPPP?
- Why is it Needed?



- Major parts of a SWPPP



- What about this free site visit?



# • What is a SWPPP?

## Maine Multi-Sector Permit (Sector M)- *Auto Salvage Yards*

### Storm Water Pollution Prevention Plan (SWPPP)



Prepared by:



FB Environmental Associates  
97A Exchange St., Suite 305  
Portland, Maine 04101

July 2007



## Site Specific Document

- ✓ Identifies Potential Sources of Stormwater Pollution
- ✓ Describes Methods for Reducing/Eliminating Pollutants
- ✓ Identifies procedures for compliance w/ State of Maine Multi-Sector Permit



- **Why is it Needed?**



## **DISMANTLING**

**Oil &  
Grease**

**Heavy  
Metals**

**Mercury**

**Ethylene  
Glycol**

## **USED PARTS STORAGE**

**Sulfuric  
Acid**

**Galvanized  
Metals**

**Petroleum  
Hydro-  
carbons**

**Total  
Suspended  
Solids**

## **OUTDOOR VEHICLE STORAGE**

**Arsenic**

**Oil &  
Grease**

**Heavy  
Metals**

**Total  
Suspended  
Solids**

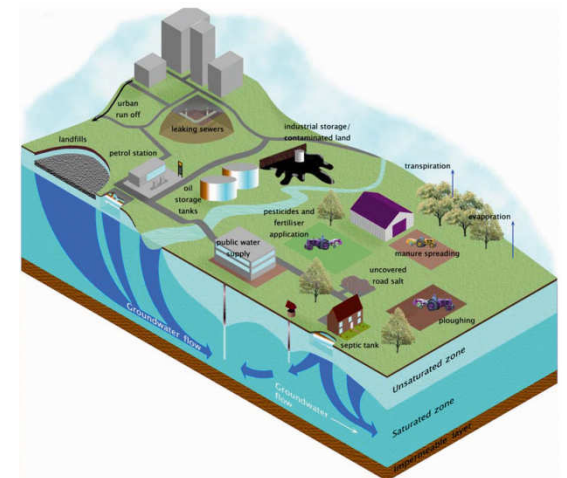
# *All Water Flows Downhill... (or soaks into the ground)*

- ✓ *Streams & Rivers*
- ✓ *Wetlands*
- ✓ *Lakes*
- ✓ *Aquifers / groundwater*



Photos: [www.maine.gov/dep/blwq](http://www.maine.gov/dep/blwq)

## **Maine's Water Resources**



# Effects of Stormwater Runoff

- ✓ *Toxic to animals & humans*
- ✓ *Smothers aquatic insects & degrades fish habitat*
- ✓ *Causes reproductive & behavioral problems*
- ✓ *Results in loss of sensitive animals & fisheries*
- ✓ *Accumulates in animal tissues*
- ✓ *Contaminates drinking water*



*This waterway is experiencing excessive algae blooms due to nutrient inputs from stormwater.*



*Photo courtesy of Center for Water Protection.*



*This oil sheen, left by parked vehicles, makes its way towards this catch basin and storm drain network. Without proper treatment, the oil will enter the nearest surface water, where it will degrade fisheries habitats.*





- **Major parts of a SWPPP**



1.



## SWPPP PREVENTION TEAM

- Plan Development
- Prevention Team



Who's your Team Leader?  
Who's on your Team?  
What are their Roles?

- Plan Implementation
- Monitoring & Inspection
- Spill Response
- Record Keeping

1.



## SWPPP PREVENTION TEAM

- Plan Development
- Prevention Team

2.



## DESCRIPTION

- Location
- # of Buildings/Use
- # of Vehicles
- # and Location of Stormwater Outfalls

How many acres?

Where are the significant natural resources?

What types of vehicles do you have?

1.



## SWPPP PREVENTION TEAM

- Plan Development
- Prevention Team

2.



- Location
- # of Buildings/Use
- # of Vehicles
- # and Location of Stormwater Outfalls

3.

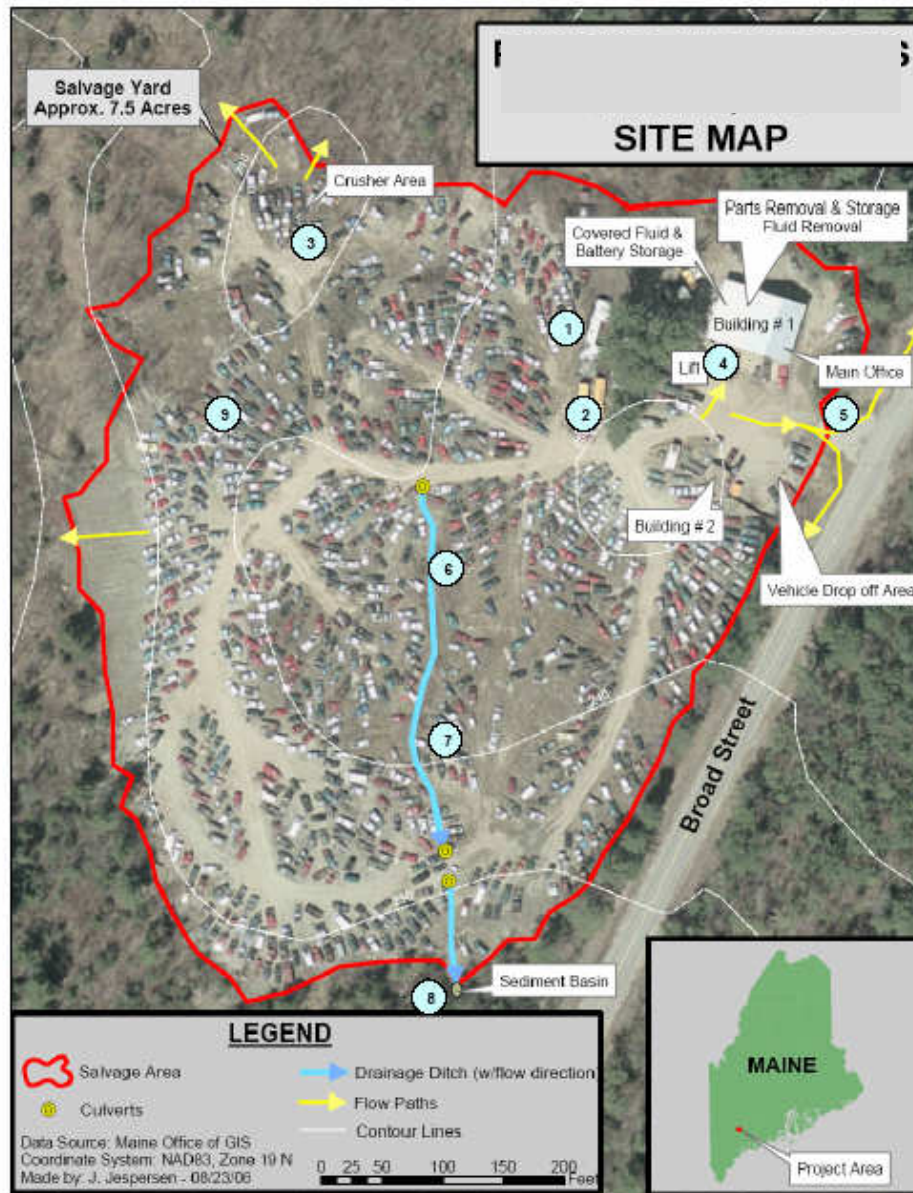


## DESCRIPTION OF ACTIVITIES

- Wash & Wastewater
- Spills & Leaks
- Non-Stormwater Discharges
- Site Summary



Figure 2. Site Map and Photos



\* Numbers refer to pictures on subsequent pages. See 5.1 - 5.7 for complete list of BMPs

## Site Map

Direction of Flow

Drainages Ditches

Buildings & Use

Location of Activities

4.



## IMPLEMENTATION

- Good Housekeeping
- Preventative Maintenance
- BMPs
- Erosion Control
- Mngt. of Stormwater
- Spill Prevention
- Employee Training



How do you manage fluids?

Do you inspect your site?

Where are your spill kits?

Are ditches & culverts stable?

Are storage trailers leaking?

4.



### IMPLEMENTATION

- Good Housekeeping
- Preventative Maintenance
- BMPs
- Erosion Control
- Mngt. of Stormwater
- Spill Prevention
- Employee Training

5.



### EVALUATION

- Visual Monitoring
- Site Inspections
- Record Keeping & Reporting
- Plan Revisions



5.



## EVALUATION

- Visual Monitoring
- Site Inspections
- Record Keeping & Reporting
- Plan Revisions



## *Monitoring, Inspections, Reporting*

- a. Keep a log of quarterly inspections
- b. Record major spills & leaks
- c. Track Annual Employee Training





4.



## IMPLEMENTATION

- Good Housekeeping
- Preventative Maintenance
- BMPs
- Erosion Control
- Mngt. of Stormwater
- Spill Prevention
- Employee Training

5.



## EVALUATION

- Visual Monitoring
- Site Inspections
- Record Keeping & Reporting
- Plan Revisions

6.



## CERTIFICATIONS

- Non-Stormwater Discharges
- Signature

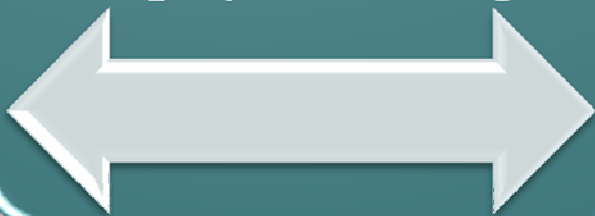


4.



## IMPLEMENTATION

- Good Housekeeping
- Preventative Maintenance
- BMPs
- Erosion Control
- Mngt. of Stormwater
- Spill Prevention
- Employee Training



*No Nonsense Solutions...*

4.



## *Good Housekeeping*

- Fluids are changed & stored indoors
- Fluid Extractors are used
- Spill Prevention & Response Kits on hand
- Batteries & Mercury Switches indoors

### IMPLEMENTATION

- **Good Housekeeping**
- Preventative Maintenance
- BMPs
- Erosion Control
- Mngt. of Stormwater
- Spill Prevention
- Employee Training



4.



## *Preventive Maintenance*

- e. Inspect all incoming vehicles!
- f. Remove fluids w/in 60 days
- g. Fluids & Haz. Parts w/in 180 days
- h. Label Waste Storage Containers
- i. Maintain Ditches & Culverts

### **IMPLEMENTATION**

- **Good Housekeeping**
- **Preventative Maintenance**
- **BMIPs**
- **Erosion Control**
- **Mngt. of Stormwater**
- **Spill Prevention**
- **Employee Training**



4.

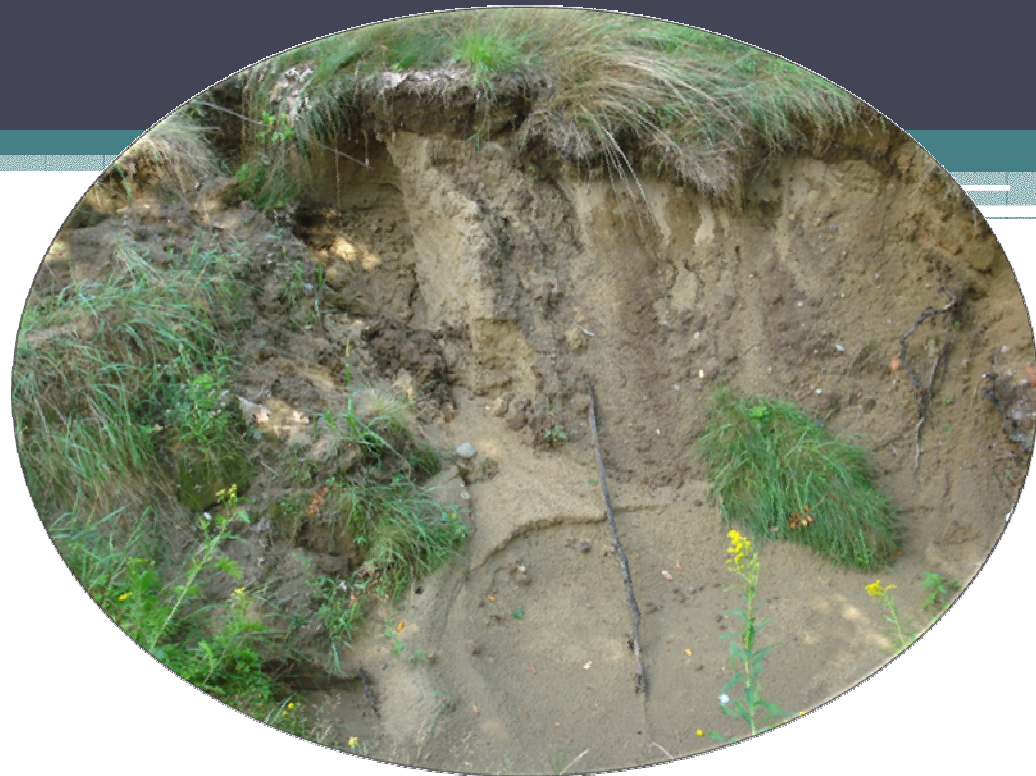


## *Sediment & Erosion Control*

- j. Keep undrained vehicles away from ditches or riparian areas
- k. Grade & Crown Roads as needed
- l. Protect Culvert inlets & outlets
- m. Vegetate drainage swales & eroding ditches

### **IMPLEMENTATION**

- **Good Housekeeping**
- Preventative Maintenance
- BMPs
- Erosion Control
- Mngt. of Stormwater
- Spill Prevention
- Employee Training



4.



## Management Of Stormwater

- n. No crushing during rain events
- o. Patch holes in leaky outdoor storage units
- p. Install a detention pond to capture runoff

### IMPLEMENTATION

- Good Housekeeping
- Preventative Maintenance
- BMPs
- Erosion Control
- Mngt. of Stormwater
- Spill Prevention
- Employee Training



4.



## *Spill Prevention & Response*

- q. Train employees on Spill Response techniques
- r. Kits in main building & fluids draining areas
- s. Label Spill Kits Clearly

### IMPLEMENTATION

- Good Housekeeping
- Preventative Maintenance
- BMPs
- Erosion Control
- Mngt. of Stormwater
- Spill Prevention
- Employee Training





- What about this free site visit?



12/02/2005





## High Priority MARA Member

- ❑ I don't have any idea what you are talking about.
- ❑ I do not currently have a SWPPP.
- ❑ I have a SWPPP but it was written 10 years ago and it's been sitting on the shelf ever since.
- ❑ I have a SWPPP, but recently I've had some real bad drainage problems and need some recommendations.



# Benefits of a Free Site Visit

- Receive a checklist with recommendations that are aligned with an SWPPP.

MARA Site Visit - .....- October 7, 2008

---

\*Spill kits, consisting of granular absorbents, absorbent socks, absorbent pads, a drip pan, a broom, and shovel, will be placed at all locations where a spill or leak could occur. These locations include areas used for dismantling, crumling, storage of oily parts, equipment maintenance, fluid storage, flaring area.

Which of the following Best Management Practices (BMPs) does your facility practice?  
(Check all that apply).

- All incoming vehicles are inspected for fluid leaks. All leaks will be contained as soon as practical after a vehicle enters the yard.
- All fluids are stored indoors/covered by a roof.
- All fluids are drained indoors using fluid extractors.
- Automobiles will not be stored for more than two weeks awaiting disassembly and during disassembly, all fluids will be drained from the automobile and properly collected and stored.
- A staff member is present during loading and unloading operations.
- Loading/unloading takes place inside.
- Drip pans are placed under any detected leaks in order to collect fluid that may drip on to ground and ultimately discharged into storm water.
- All scrap metal will be cleaned of hazardous materials prior to storage on the scrap metal pile.
- Salvage vehicles have fluids removed prior to "long term" (30 days or more) storage.
- All fluids, refrigerant, batteries and mercury switches are removed from appliances and all vehicles unable to be driven under their own power within 180 days of acquisition.
- Mercury switches are removed and stored in a plastic container indoors.
- Batteries are stored on a pallet in dry storage building or are covered.
- Antifreeze and windshield wiper fluid are recycled.
- Waste oil is recycled.
- Heavy machinery is parked under a dry roof.

Does your facility practice the following guidelines stated in the SWPPP?  
(Check all that apply).

- A current Multi-Sector Permit has been submitted to Maine DEP, and a SWPPP is on site.
- All employees are trained annually using a stormwater pollution prevention employee training program.

3

MARA Site Visit - .....- October 7, 2008

---

- Pollution prevention team members meet at least twice a year to discuss the effectiveness of and improvements to the Plan.
- The facility is visually examined for stormwater discharge every 3 months.
- The entire facility is inspected at least four times a year.
- The facility retains records described in this SWPPP for at least three (3) years from the date permit coverage expires or is terminated.
- Any facility upgrades are documented in the SWPPP.

Summary/Additional Recommendations:

- Label/gather spill supply kits and have available at all potential spill areas.
- Clearly label spill kits and have them available at all potential spill areas.
- Clearly label all fluid containers.
- Cover dumpsters or clean all scrap metal of hazardous material before storing in dumpster.
- Remedy leaky parts storage trailers by patching roofs and floors and leveling to eliminate leaks in front.
- Vegetate drainage ditches and resurface high erosion potential roadways with crushed rock to eliminate continual sedimentation of ditches and catch basins.
- Visually monitor stormwater 30 minutes after rainfalls (quarterly) at outfalls and conduct annual water sampling to ensure hazardous materials are not leaving the site. If test results are positive, take immediate action to reduce discharge at the outfall (e.g. vegetated buffer strip, detention basin, etc.).
- Establish a 250' buffer between salvage yard and Toga Stream.
- Resume Annual Employee Training.
- Update your SWPPP when major facility upgrades occur.

For further information, or for assistance with your SWPPP, contact:

FB Environmental Associates  
97A Exchange St., Suite 205  
Portland, ME 04101  
(207)-221-6716

4



# Benefits of a Free Site Visit

- ❑ Receive a site map of your property including location of natural resources.





# Benefits of a Free Site Visit

- ❑ Receive a 25% discount on development of a SWPPP.





# Benefits of a Free Site Visit

- ❑ OTHER SERVICES
- ❑ Employee Training
- ❑ Assistance with BMP Implementation
- ❑ Permitting Assistance





FB Environmental Associates  
Jennifer Jespersen & Fred  
Dillon  
(207) 221- 6699  
[www.fbenvironmental.com](http://www.fbenvironmental.com)

28/11/2005 10:55

